

Latin America Notes



Geography in Mexico



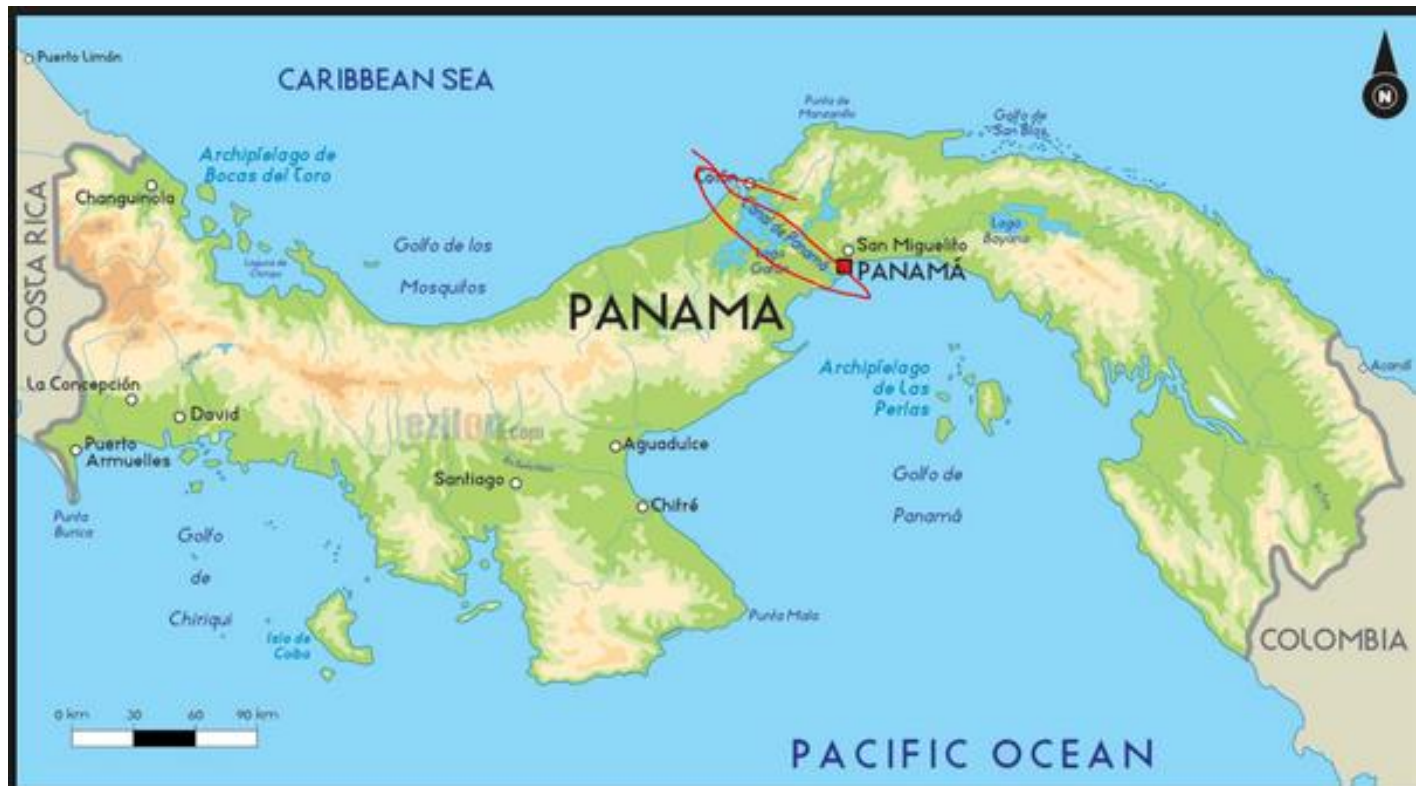
- Sierra Madre Mountains which have 3 parts in the east, west and south parts of Mexico

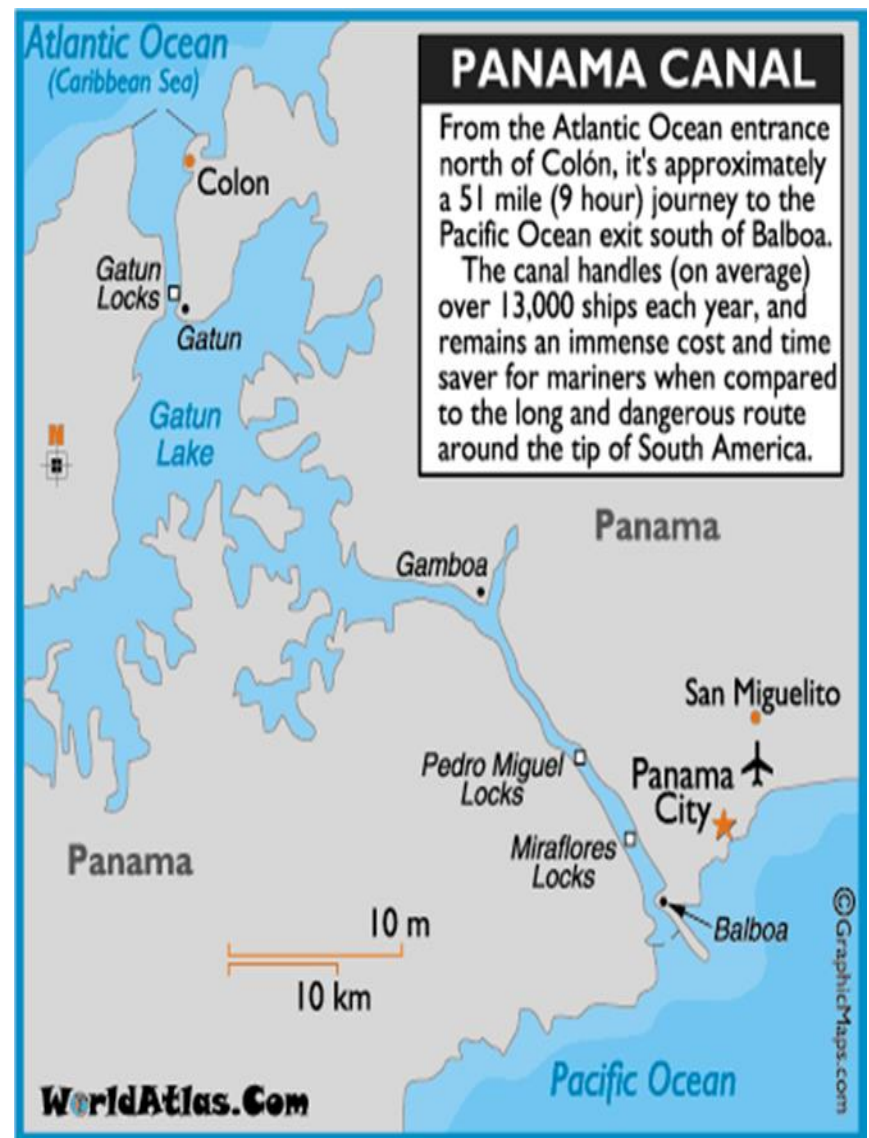


Geography in Central America



- Panama Canal which allows ships to go from the Caribbean Sea to the Pacific Ocean
- was built in 1914 and has made trade quicker and easier







Geography in South America



- Andes Mountains – the longest mountains in the world, over 4,000 miles along the western side of South America



- Amazon River – 2nd longest river in the world, over 4,000 miles



- Atacama Desert – the driest place on Earth, some parts have never had rain, in Chile



- Amazon Rainforest – world’s largest tropical rainforest, covers about 40% of South America







Now label the maps.



Countries

1 – Mexico

2 – Cuba

3 – Panama

4 – Chile

5 – Brazil

6 - Colombia



Physical Features:

- 1 – Gulf of Mexico
- 2 – Sierra Madre Mountains
- 3 – Panama Canal
- 4 – Caribbean Sea
- 5 – Amazon River
- 6 – Amazon Rainforest
- 7 – Atacama Desert
- 8 – Andes Mountains
- 9 – Pacific Ocean
- 10 – Atlantic Ocean

Copy video questions – Panama Canal

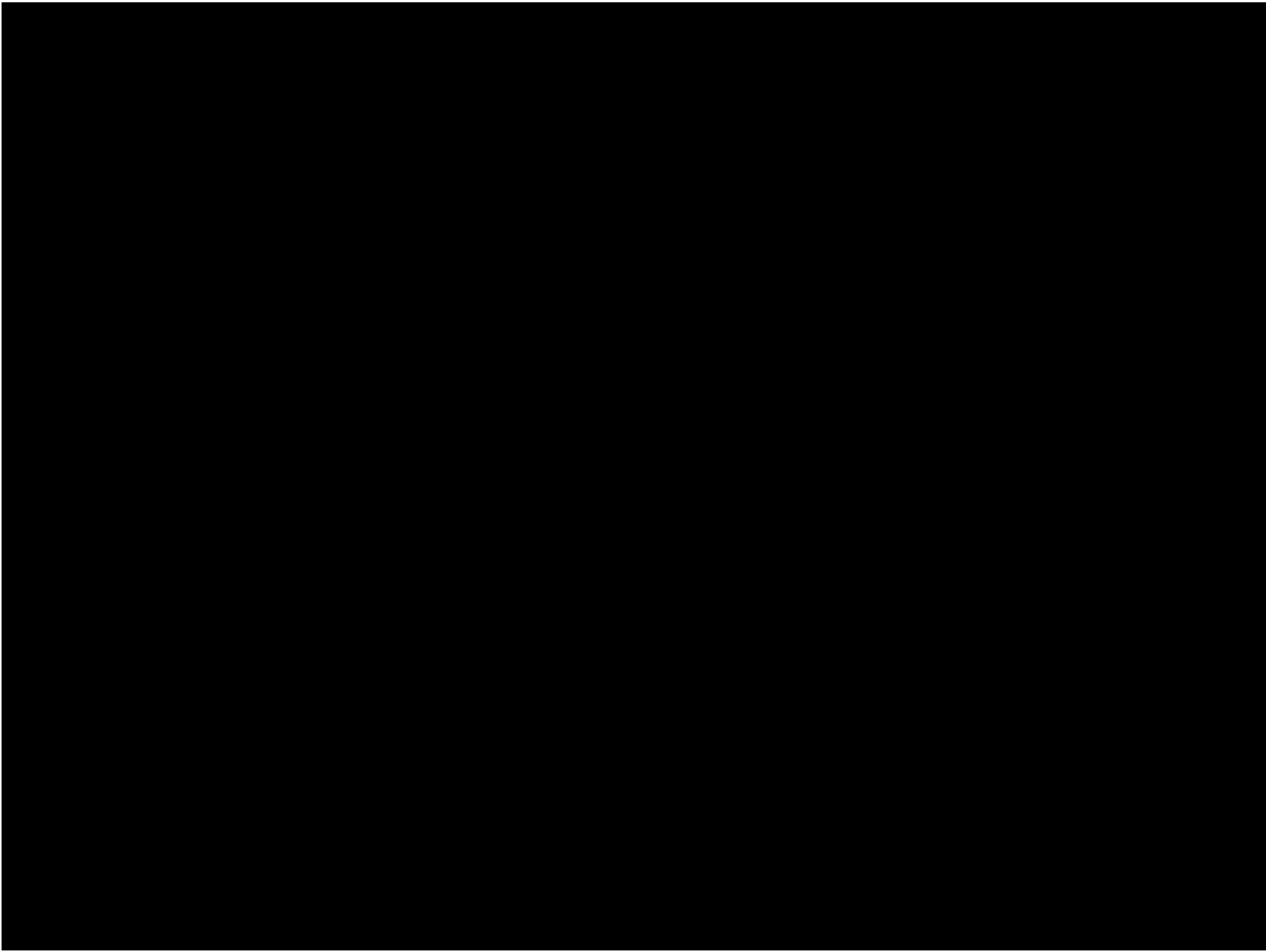
13. when completed?

14. how many miles?

15. how many hours?

16. how many miles w/o?

17. how heavy are ships?



Questions about notes: answers only



18. What mountains are found in Mexico?

19. What is the driest place on Earth?

**20. What allows an easy route for ships
between the Caribbean Sea and Pacific
Ocean?**

21. What mountains are found in South America?

22. What is the 2nd largest river in the world?

23. What was the benefit of building the Panama Canal?

24. The Amazon Rainforest covers about ___% of _____.

25. The Andes Mountains and the Amazon River are both over _____ miles long.

26. In what country would you find the Atacama Desert?

27. Summary Sentence:

Two of the important features in Latin America are the _____ and the _____.

Environmental Problem in Mexico



- bad air pollution in Mexico City because the Sierra Madre Mountains trap the pollution from cars, factories, and power plants



- to try and help the problem, the city limits the # of days people can use their cars



Environmental Problem in Brazil



- destruction of the rainforest due to deforestation
- deforestation is the clearing of the forest, selling the timber and using the cleared land for farmland and living space





2/3
of all animals and
plants live in rainforest

RAINFOREST

Emergent layer ☀️-100% 50-80m

Canopy layer ☀️-95% 30-50m

Understory layer ☀️-5% 1-30m

Forest floor ☀️-2%

Bee Hummingbird
(*Mellisuga helenae*)
is the smallest living bird

137 species
of plant and animal
we are losing
every single day due
to rainforest deforestation

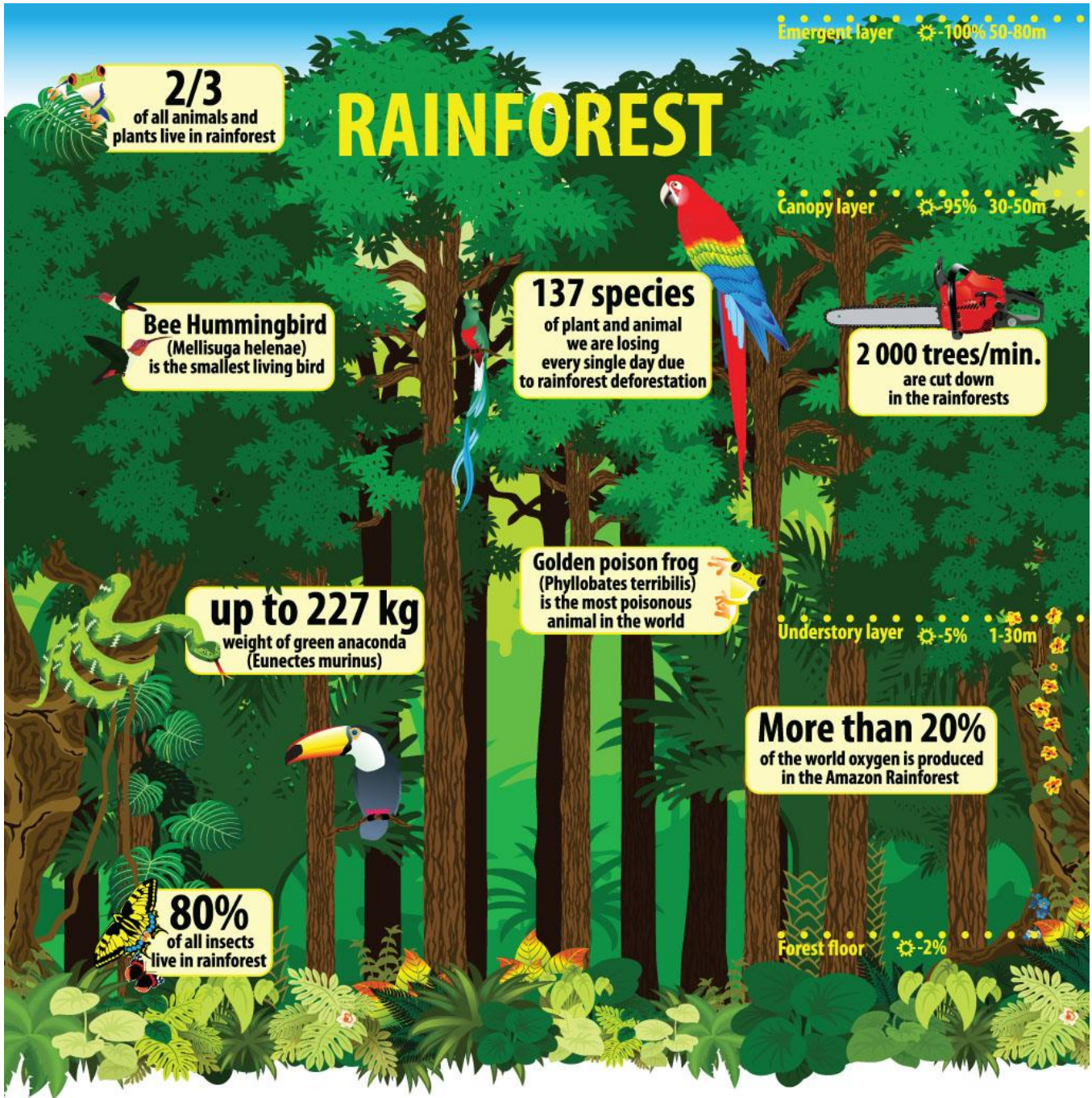
2 000 trees/min.
are cut down
in the rainforests

up to 227 kg
weight of green anaconda
(*Eunectes murinus*)

Golden poison frog
(*Phyllobates terribilis*)
is the most poisonous
animal in the world

More than 20%
of the world oxygen is produced
in the Amazon Rainforest

80%
of all insects
live in rainforest



- Brazil's gov. has passed many laws restricting logging but the laws aren't enforced due to lack of funding



Amazon Rainforest Video

28. List at least 10 animals mentioned in the video.



Questions about notes: answers only



29. The environmental problem in Brazil is _.

A. bad air pollution

C. acid rain

B. destruction of rainforest

D. oil spills

**30. The Sierra Madre mountains cause bad
_____ in Mexico.**

31. True or False – The Brazil government is doing a good job trying to eliminate deforestation.

32. True or False – The government in Mexico City is trying to eliminate air pollution.

33. Summary Sentence:

The problem in Mexico is _____ and the problem in Brazil is _____.

Amazon Rainforest Video

34. List the 5 facts mentioned in the video.

